



Autrey Mill

Explore | Appreciate | Preserve

ANNUAL REPORT 2016



To create a destination and educational resource
to inspire exploration, appreciation, and preservation
of the natural environment and local history.

TABLE OF CONTENTS

- History and Mission of Autrey Mill Nature Preserve _____ 3
- Staff and Board of Directors _____ 4
- Community Offerings _____ 5
- Financial Overview _____ 7
- Community Support _____ 8
 - Community Partners
 - Business Support
- Mill Circle and Nature Friend Members _____ 9
- Operational Directors Note _____ 9

A message from the Autrey Mill Board of Directors...

The new year brings an opportunity for reflection, evaluation and renewal. The Annual Report is a snapshot of our year in review; but how do you measure a year?

A song in the musical, “Rent,” asks that very question, offering options such as daylights, sunsets, inches, miles etc. A year in the life of Autrey Mill can be measured by those means, as well as by visitors, programs, volunteer hours, dollars and cents and accomplishments. The lyrical answer, however, is, “How about love?”

In that spirit, here is the love our visitors have shared with Autrey Mill in the last year:

“...it was so much fun learning about all the good things bugs can do.” -The Tech Titans

“I had an awesome time at my birthday. It was great!” -Georgia

“Miss Mary is an amazing teacher!! (She) makes learning incredibly fun!! Miss Allison is very sweet!! We learned so much and had a wonderful time!! We always have so much fun learning and going on adventures at Autrey Mill.” -Izabella Wallace

“My girls loved the program and were begging to go back for the next class before they were even in the car from this one!” -Nicole Blaisdell

We have accomplished so much within the last year: broad-scale inventorying of our Heritage collections, purchasing museum-quality software to assist us to properly catalogue and research over 6,000 objects, building a new webpage, transferring registration to Rec 1, hiring new staff and improving our physical space. All this has been with the goal of making it easier for visitors to discover, register and attend programs, and to continue our mission. All that we hope to achieve within the year to come is measured against our goal of preserving a place within which our community can explore and appreciate natural and historical resources.

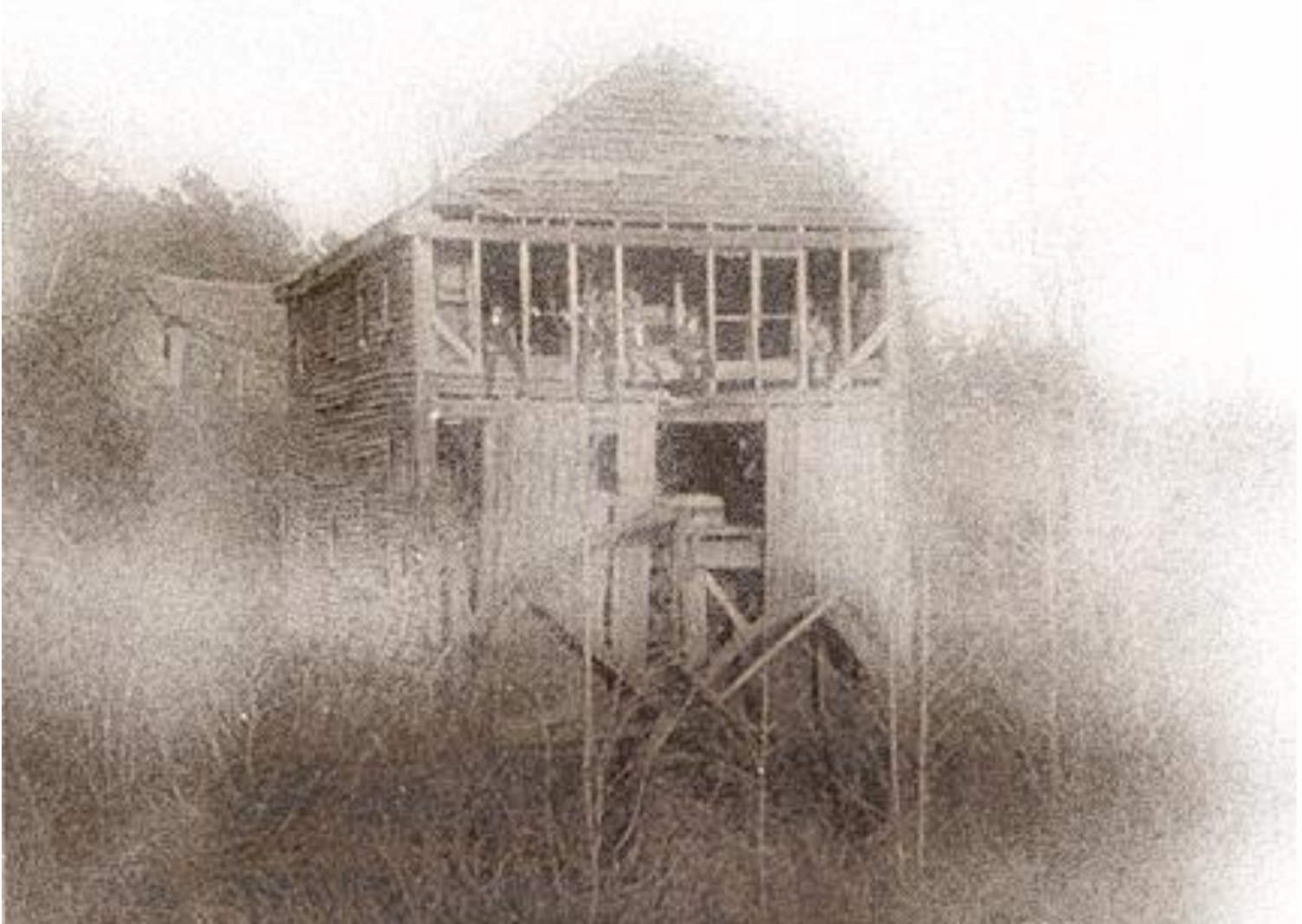
Today's visitors are tomorrow's stewards.

History and Mission

The beginnings of Autrey Mill date to a 1988 grassroots effort by community advocates to save the woodlands from development, prevent the loss of the old mill site, and halt the demolition of historic buildings situated on the property. In 1989 the Autrey Mill Nature Preserve Association was formed as a non-profit organization to operate, protect and improve the preserve. The beautiful Autrey Mill of today was built over a 27-year period under the leadership and vision of our non-profit organization's Board and its talented staff, with the vital help of generous public and private supporters, and by harnessing the indispensable work of volunteers.

The Autrey Mill Nature Preserve Association is a Non Profit (501)(c3) organization that operates the preserve and historic buildings and provides all the environmental, heritage and event programming offered to the public.

Upon the incorporation City of John's Creek, Autrey Mill was officially designated a city park. This created a unique partnership that preserves the roles of The Autrey Mill Nature Preserve Association in development, fundraising and oversight of the programming, protecting the natural environment and preserving the history of the area. We anticipate the 2016 Parks Bond Referendum will contribute to increasing foot traffic and continued improvement of the facilities.



Staff and Board of Directors

Staff:



Toby Bramblett
*Operations
Director*



Alison Kane
*Heritage
Instructor*



Claudette Lopez
*Collections &
Exhibits Manager*



**Lauren
McDaniel**
Instructor



Judy Webb
Office Assistant



Mary Winder
Program Director

2016-2017 Board of Directors

Karen Daniel
President

Pam Sutton
Vice President

Jackie Bass
Vice President

Kathy Reed
Vice President, Treasurer

Emily Nicoli-Austin
Recording Secretary

Lara Maltby *

Howard Sharfstein

Jason Sutton*

Joan Compton**

Anderson Marshal**

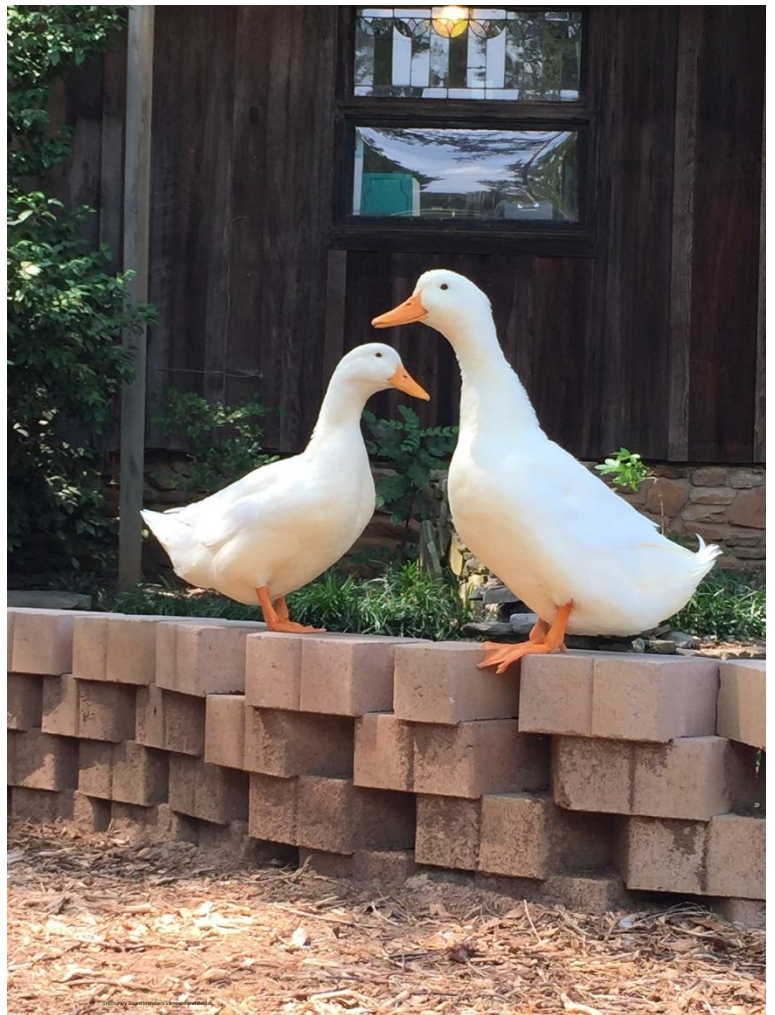
Janis Hill (emeritus)

Michelle Sienkiewicz (emeritus)

Judy Webb (emeritus)

** joined in 2016*

***2016 outgoing Board Members*



THANK YOU for your years of service.

Community Offerings



Cost-free Recreational Area

- Free public access is available every day from 8am to dusk
- Over 2 miles of trails with bridges, boardwalks, benches, pavilions, and vantage points designed for quiet enjoyment of Autrey Mill's habitats and historic sites

Educational and Recreational Programming

- Classes and workshops for adults
- Classes for children (includes home school classes, Scout badge activities, preschool activities)
- Field Trip Destination (meets Georgia curriculum standards)
- Summer and Holiday camps
- Scheduled Docent-led Tours of historic buildings
- Guided nature hikes
- Outreach programming (offered off-site to area festivals, schools and community groups)
- Annual events (Spooky Mill, Scout Day, Wild Weekend)

Visitor Center and Natural History Museum

- Exhibits of live fish, amphibians, and reptiles native to Georgia, and a African tortoise
- Ducks, a rabbit and chickens in a fenced pond area
- Displays and dioramas of woodland animals, bones and skins
- Living lab for hands-on inspection of nature
- Lending Library of nature-themed children's literature



Heritage Center

- Preserved landmark historic buildings and donated artifact collections
- Heritage gardens
- Oral history project and research into the inhabitants of this land during the past 400 years

Performance Venue

- “Unplugged” concerts feature heritage based musical performances
- 366 attendees in 2016

Event Rental Facility

- A Victorian farmhouse, mid-1800s church, large pole barn, and amphitheater are available for rent for parties, weddings, corporate retreats, reunions, and community groups
- 398 Event Attendees in 2016

Community Engagement through Volunteerism

- 10,130 Total Volunteer Service Hours in 2016
- 29 Scout Service projects completed
- The National Charity League donated over 1,300 volunteer hours
- Our Heritage Docents: Jan Mairose, Suzette Meskell, Mary Jo Malowney, Janice Locke, and Sheila Wilson contributed over 225 hours in 2016



“We depend upon community volunteering as a means to help us operate the preserve and provide programming, but also encourage it to build emotional investment in a place that connects community members with the history and natural beauty our region has to offer.”



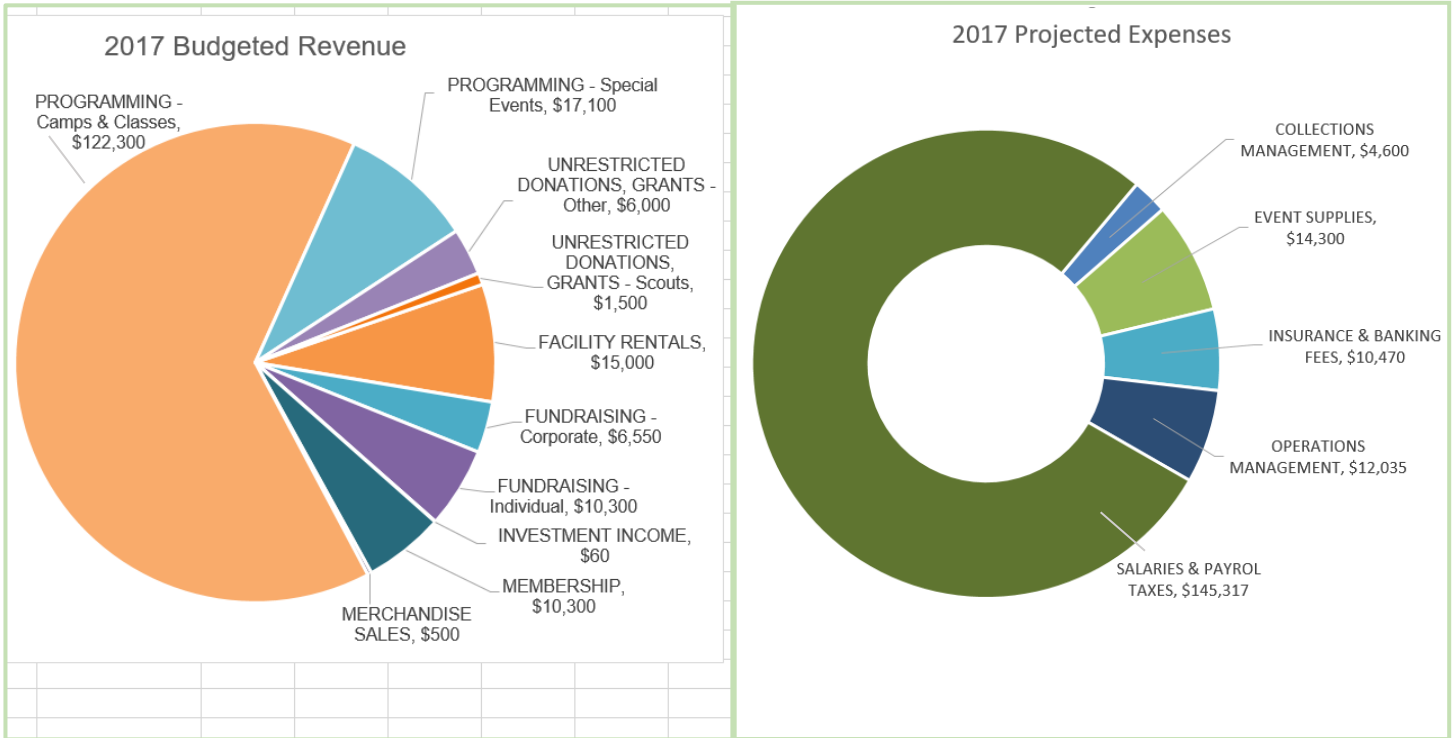
In addition to Boy and Girl Scouts, the following organizations and individuals deserve special recognition for the donation of their time to Autrey Mill:

| | |
|-------------------------------|--------------------------|
| Jack and Jill of America Inc. | John’s Creek High School |
| Young Men’s Service League | Football Team |
| MackKlefresh and Associates | Church of Latter Day |
| National Charity League, Inc. | Saints |
| REI | |



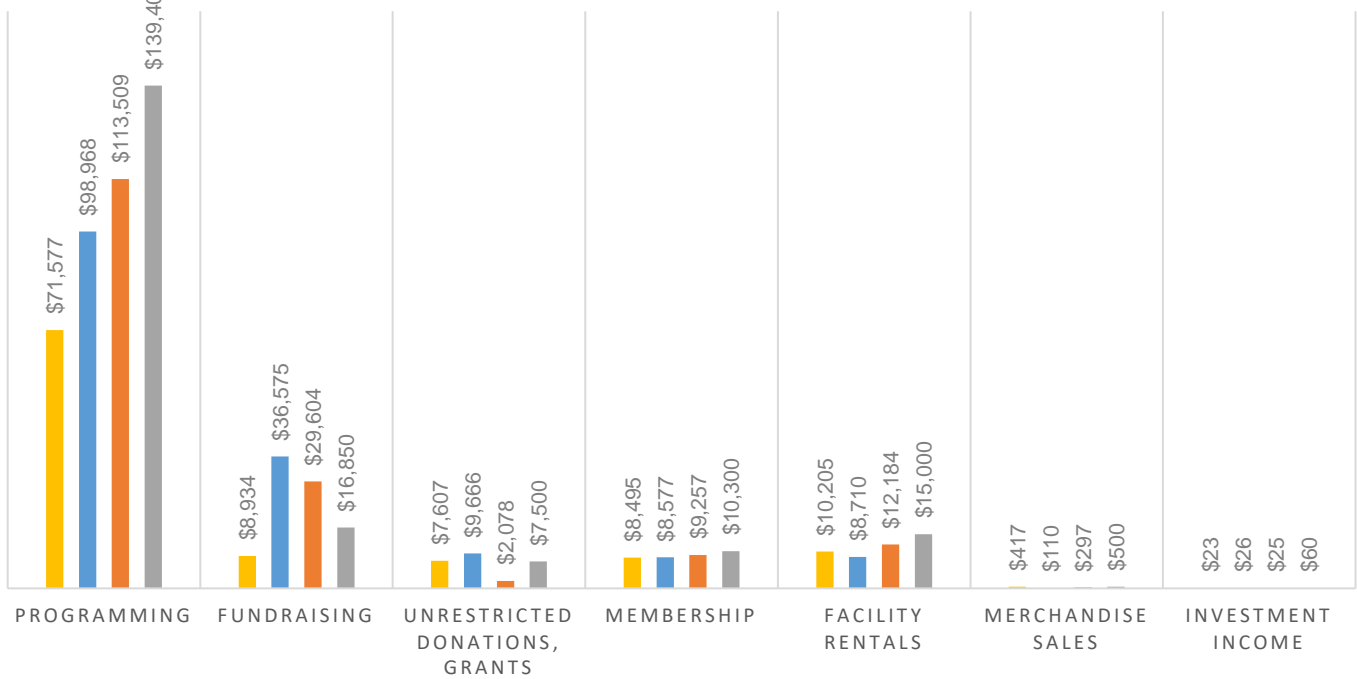
Special thanks to Bill Yacola, a volunteer since 2015 has contributed 100 over hours in 2016 alone!

Financial Overview



3-YEAR REVENUE HISTORY

■ 2014 Actual ■ 2015 Actual ■ 2016 Actual ■ 2017 Budgeted



Community Support

In-Kind Donors

Autumn Hill Nursery
Leadership Johns Creek
National Charity League
Whole Foods Johns Creek

Wild Birds Unlimited
The MacConnell Family
Pam and Jason Sutton
Roswell Cub Scout pack 199



Business, Foundation and Community Group Donors

Amazon Smile
Dr. David B. Brothers
Chattahoochee Woman's Club
City of Johns Creek
Darden Restaurant Foundation
Georgia Power
Interface, Inc
Johns Creek Foundation
Kimberly-Clark Foundation
Kroger Rewards
Jacqueline Bass
Preservation, LLC

National Charity League
Perrigo Company
Raymond James Global
Recall Corporation
Sawnee EMC Foundation
Staples
The UPS Foundation
Whole Foods
Polkadot Dentistry
Party Tree Photography



Ongoing Partnerships

Arts Alliance of John's Creek
Boy Scouts of America
The City of John's Creek
Elevate Barre Studio
Fulton County Schools
Heritage Sandy Springs

Keep North Fulton Beautiful
Pike Nurseries
PRISM
Johns Creek Convention
and Visitors Bureau



Major Sponsors of

WILD ABOUT AUTREY MILL
a safari-themed fundraiser



Kimberly Clark
City of Johns Creek
Troutman Sanders
Irma Rodriguez and Fred Fernandez
'cue Barbecue
Lynne Riley
Fallaize Insurance Agency
Bill and Karen Daniel

CH2M Hill
MacKelfresh & Associates
Harrah's Cherokee
Don & Jan Mairose
Billy Moscow
Howard and Mary Sharfstein
Khafra Veolia

Mill Circle and Nature Friend Members



MILL CIRCLE (\$250-\$499)

Gary and Nancy Bivins
 Kelley and Greg Hundt
 Gregory and Sarah Poling
 Rich and Lynn Schultz
 Howard and Mary Sharfstein

NATURE FRIENDS

Ducan and Jill Angove
 Jan Bramblett
 Bowen and Marlies Chapman
 Joan and Russel Compton
 Christopher and Nicole Coughlin
 Cindi Fortmann
 Joe and Monica Gerhardstein
 Mark and Vanessa Goggans

(\$100-\$249)

Mark and Karen Haugland
 Erin and David Hayes
 Pat and George Hogan
 Don and Jan Mairose
 Teresa Mcgraw
 Robin Tyus
 Cleotilde Vatter

Operations Director's Note

In March of 2016, I joined Autrey Mill as the Operations Director. Since that time, we have taken major strides towards updating our “behind the scenes” operational and book-keeping software. We have created a new web page, adopted Rec1 for registration, and hired some additional part-time staff. We anticipate all of these changes will make it easier for visitors to learn about all we have to offer, let us focus on creating great programs, and allow us to grow our Autrey Mill family.

Over the past year, I've had the pleasure of meeting many visitors who come to Autrey Mill, both familiar faces and new. I have been amazed by how many new visitors remark, “I didn't even know this was here!” I'd like to change that, without changing the essence of the place.

In the year to come, our goals include, building our animal collection, continuing our efforts to catalogue and preserve our historical collections, expanding our programming, completing Phase One in the development of a working farm museum and enhancing our trail network. To accomplish these goals will require funds before the effects of these changes can be revenue generating.

My focus will be building community and financial support to allow Autrey Mill to share its resources and mission effectively with a larger audience. Our vision statement is “A local treasure growing in visibility and stature to become a regional destination of choice.”

Every contribution of supplies, time and money counts towards helping us reach that goal!

THANK YOU FOR YOUR SUPPORT! I'll see you around the Mill.

-Toby Bramblett



**From all of us here
at**

**Autrey Mill
THANK YOU!**